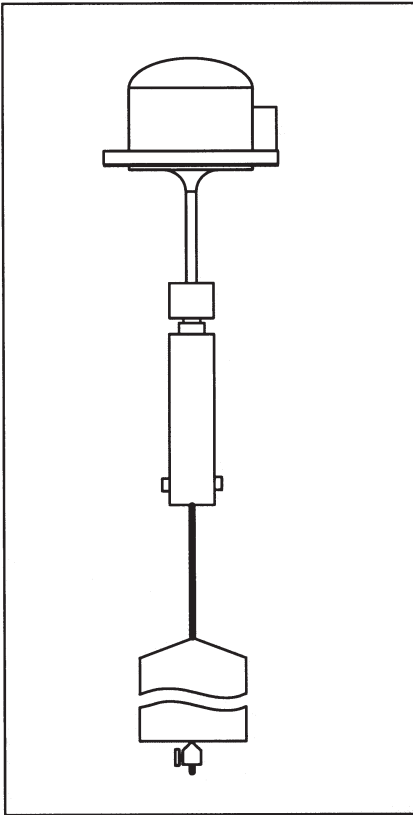




WEATHERPROOF DISPLACEMENT TYPE LEVEL CONTROLLERS

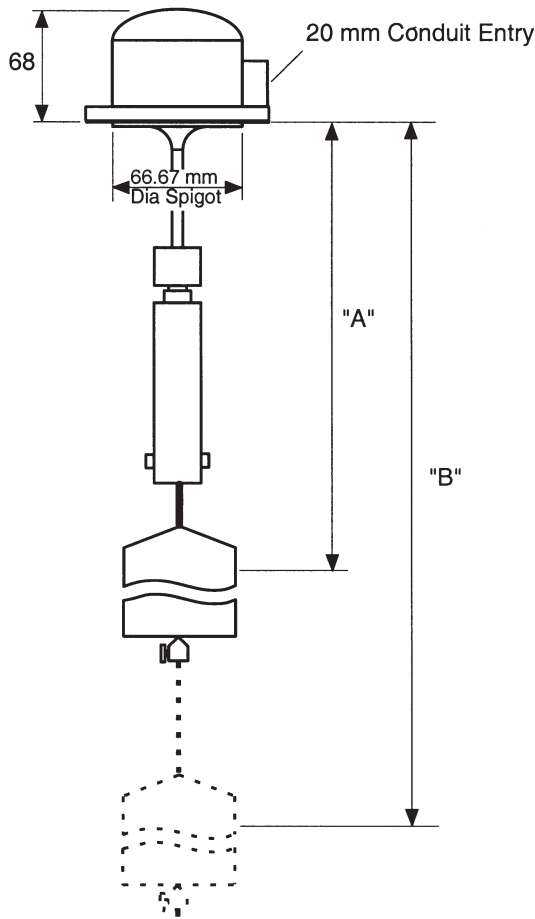


- Single or Double Displacers
- Weatherproof to IP 67
- Up to 10 Metres Tank Depth
- Use with Viscous Liquids
- High and Low Alarms
- Stainless Steel Housing

The displacement type float switch is based on the principle that a solid body immersed in a liquid is subject to an upthrust equal to the weight of liquid which it displaces. As this load is rising or falling so the magnet will rise or fall a pre-determined distance under the influence of the balance spring, thus operating the appropriate reed switch to achieve the requisite condition.

The switch can accommodate two separate reed switches so that if required up to two separate level indications can be obtained. The available reed switches are detailed in the table below.

A range of displacers for various specific gravities can be fitted and these are independently adjustable within the limits as specified. The standard specific gravity range is from 0.65 to 1.25 but above and below this can be made to special order.



SPECIFICATION

Materials of Construction:
 Displacer - polypropylene
 All other parts - Stainless Steel
 Temperature Range:
 Maximum 80°C
 Maximum Working Pressure:
 5 Kg/cm²
 Displacer Availability:
 Polypropylene: PP
 Stainless Steel: SS
 Reed Switch Availability:
 See Table 1 Below
 Weatherproof:
 IP67 when fitted with a suitable gland

NOTES

- 1) Dimension "A" has a minimum switching level of 300mm for single level switches and 450 mm for dual level switches.
- 2) Dimension "B" has a maximum switching level of 10 M.
- 3) Type 60 and 500 reeds cannot be used on dual level Displacer switches.

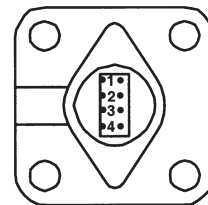
TYPICAL ORDERING CODE

Single Level: FS4539/PP/250/MOR/4000
 Dual Level: FS4497/PP/250/MOR/450/BOF/3500

Displacer Type _____
 Reed Switch _____
 Switching Action _____
 Switching Level _____

Specification	Reed Switch Designation		
	Single Pole Single Throw (SPST)	Changeover (SPCO)	
Type :	250 RS7	500 RS10	60 RS13
Max voltage AC	250	440	240
Max voltage DC	250		300
Max current amps	3.0	2.0*	2.5
Max wattage	250	500	60
Max surge amps	-	10*	-
Max operating temp	150°C	125°C	150°C
Min operating temp	-40°C	-50°C	-40°C
Contacts	Rhodium	Tungsten	Rhodium

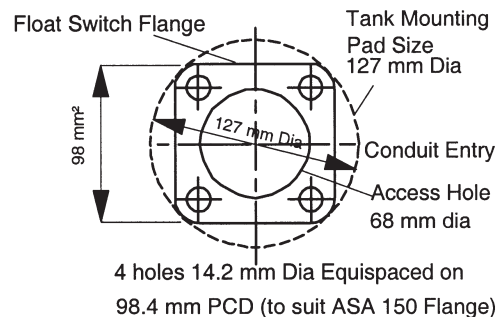
Table 1 (* at 240V)



DRILLING DIAGRAM

Terminal Block Connections:

Contact			Contact		
Single Level	2	Grey	Single Level	2	White
Type 500	3	Grey	Not Type 500	3	White
Single Level	1	Black	Two Level	1	White
Changeover	2	White	Not Type 500	2	White
	3	Red		3	Red
				4	Red
					Top
					Bottom
					Bottom



WP04 issue A 08/99



Cobham Fluid Systems Limited

Holland Way, Blandford Forum, Dorset, England. DT11 7BJ
 Tel: 44 (0)1258 486600 Fax: 44 (0)1258 486601
 www.cobhamfluidsystems.com
 sales@cobhamfluidsystems.com

Copyright: Cobham Fluid Systems.

This publication provides outline information only, which (unless agreed by the Company in writing) may not be used, applied or reproduced for any purpose or form part of any order or contract or be regarded as a representation relating to the products or services concerned. The Company reserves the right to alter without notice the specification, design, price or conditions of supply of any product or service.

A Flight Refuelling company



A Collective Member of

