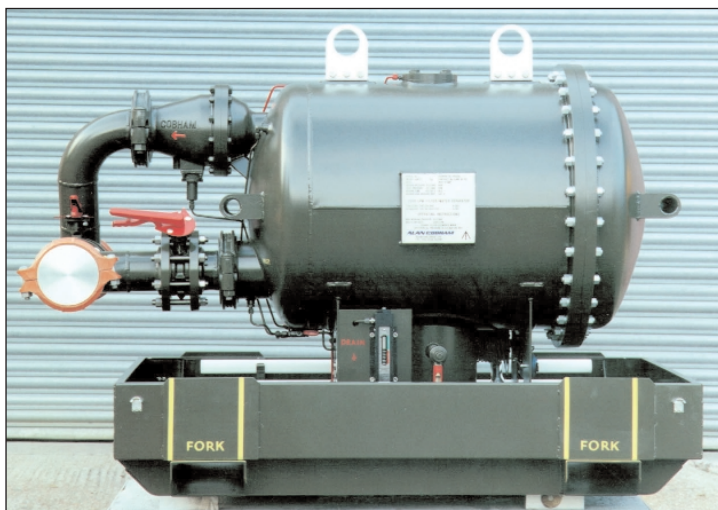




## 2000 LITRE/MIN MAN PORTABLE FILTER WATER SEPARATOR



- To latest DEF STAN 49-3/3
- Easy to handle
- Simple to install
- Integral bund/cover
- Isolation/bypass manifold
- Water level control/shut off

This lightweight, portable and robust unit suitable for forward area refuelling has been developed in conjunction with British Forces and the Defence Evaluation and Research Agency and is to enter service in 1999. The design meets BS5500 pressure vessel standard and accommodates the latest NATO standard size of element.

With an integral drip tray and isolation/bypass manifold installation is simplified and the outlet servo valve can provide downstream pressure regulation if required. A float mechanism in the sump drives a high water level indicator. If the water is not drained and the level rises further the outlet valve will close. The unit comes complete with an integral top cover which allows direct access to fork pockets and lifting eyes.

<b>Flow rate :</b>	2000 l/min
<b>Working pressure :</b>	10.5 bar g
<b>Dry weight :</b>	300 kg with cover
<b>Material of Construction :</b>	Aluminium alloy
<b>Inlet :</b>	6" Victaulic
<b>Outlet :</b>	6" Victaulic
<b>Coalescer Elements :</b>	8-off 150 x 845mm
<b>Separators :</b>	6-off 150 x 368mm



### Cobham Fluid Systems Limited

Holland Way, Blandford Forum, Dorset, England. DT11 7BJ  
Tel: 44 (0)1258 486600 Fax: 44 (0)1258 486601  
www.cobhamfluidsystems.com  
sales@cobhamfluidsystems.com

Copyright: Cobham Fluid Systems.

This publication provides outline information only, which (unless agreed by the Company in writing) may not be used, applied or reproduced for any purpose or form part of any order or contract or be regarded as a representation relating to the products or services concerned. The Company reserves the right to alter without notice the specification, design, price or conditions of supply of any product or service.

*A Flight Refuelling company*



A Collective  
Member of

**IP** THE INSTITUTE  
OF PETROLEUM