

CCMY9600 SERIES

4" API BOTTOM LOADING COUPLING

INTRODUCTION

The Avery Hardoll CCMY9600 Bottom Loading Coupling is designed for installation in road tanker refuelling terminals, fitting to standard bottom loading arms in conjunction with a spool piece (optional) and swivel elbow. It is interchangeable with all similar couplings and mates with a 4" API tank unit.

The design of the coupling allows for ease of operation, attachment of the coupling and opening of the coupling poppet valve being one handed operations. The coupling is positively latched to the tank unit by means of three large spring-loaded latches, which are locked into engagement by the initial movement of the operating handle. Further movement of the operating handle opens the poppet valve. Disconnection of the coupling is again a one handed operation. The design of the operating mechanism includes 3 interlocks to ensure that the valve cannot be opened if the coupling is not correctly mated to the tank unit.

The optional spool piece may be fitted between the bottom loading coupling and the swivel elbow when an extended reach is required. The swivel elbow provides the bottom loading coupling with ease of movement and positioning for aligning with the 4" API head mounted on the vehicle.

A handle is provided to assist movement of the loading arm assembly. For multi-fuel installations the end cap of the handle may be supplied in various colours (at customers request) to aid identification.



- SINGLE ACTION OPERATION
- STRAIGHTFORWARD RETROFIT TO EXISTING LOADING ARMS
- ROBUST AND DURABLE
- HIGH WORKING PRESSURE OF 10.3 bar (150 PSI)
- LOW DECOUPLING LEAKAGE (Environmentally Friendly)

Specification

CCMY 9600 4" API Coupler to mate with
4" API 1004 standard tank unit

Material Components in contact with product
are of aluminium alloy or stainless steel

Seals Fluorocarbon

Weight 9.5 kg (21lb)

Flanges 4" TTMA (8 hole)

Max. Working Pressure 10.3 bar (150 psig)

Test Pressure 15.5 bar (225 psig)

Min. Operating Temperature -20 deg C (-4deg F)

Max. Operating Temperature +60 deg C (+140 deg F)

CCMY 960 Elbow / Swivel with Handle

Material Aluminium Alloy

Seals Fluorocarbon

Wear Strips PTFE

Flanges 4" TTMA (8 hole)

CCMY 9602 Spool Piece

Material Aluminium Alloy

Weight 2 kg (4.5lb)

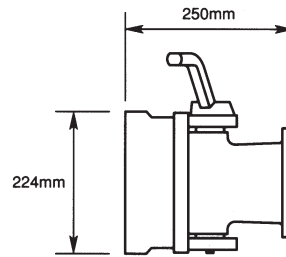
Flanges 4" TTMA (8 hole)

CCMY 9603 Complete Assembly

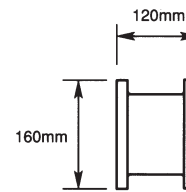
Weight 17.2 kg (38lb) (including fixing parts)

Overall Dimensions

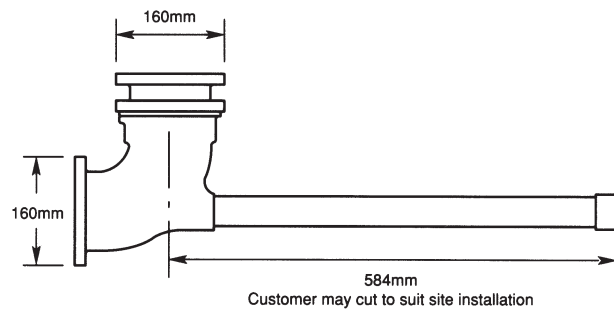
CCMY 9600 - 4" API Coupler



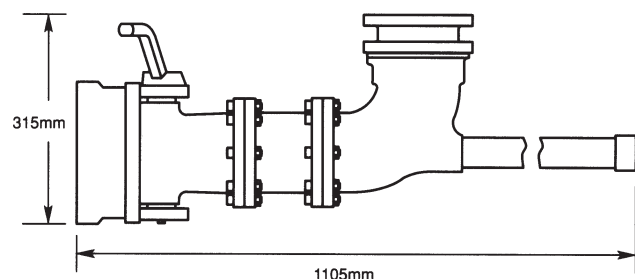
CCMY 9602 - Spool Piece



CCMY 9601 - Elbow / Swivel with Handle



CCMY 9601 - Complete Assembly



PRESSURE DROP

Avery Hardoll bottom loading couplings have exceptional low pressure loss characteristics, less than 0.275 bar at 3000 lt / min.

PRESSURE
LOSS (bar)

FLOWRATE (lt / min x 1000)



Cobham Fluid Systems Limited

Holland Way, Blandford Forum, Dorset, England. DT11 7BJ

Tel: 44 (0)1258 486600 Fax: 44 (0)1258 486601

www.cobhamfluidsystems.com

sales@cobhamfluidsystems.com

Copyright: Cobham Fluid Systems.

This publication provides outline information only, which (unless agreed by the Company in writing) may not be used, applied or reproduced for any purpose or form part of any order or contract or be regarded as a representation relating to the products or services concerned. The Company reserves the right to alter without notice the specification, design, price or conditions of supply of any product or service.

A Flight Refuelling company



A Collective
Member of

